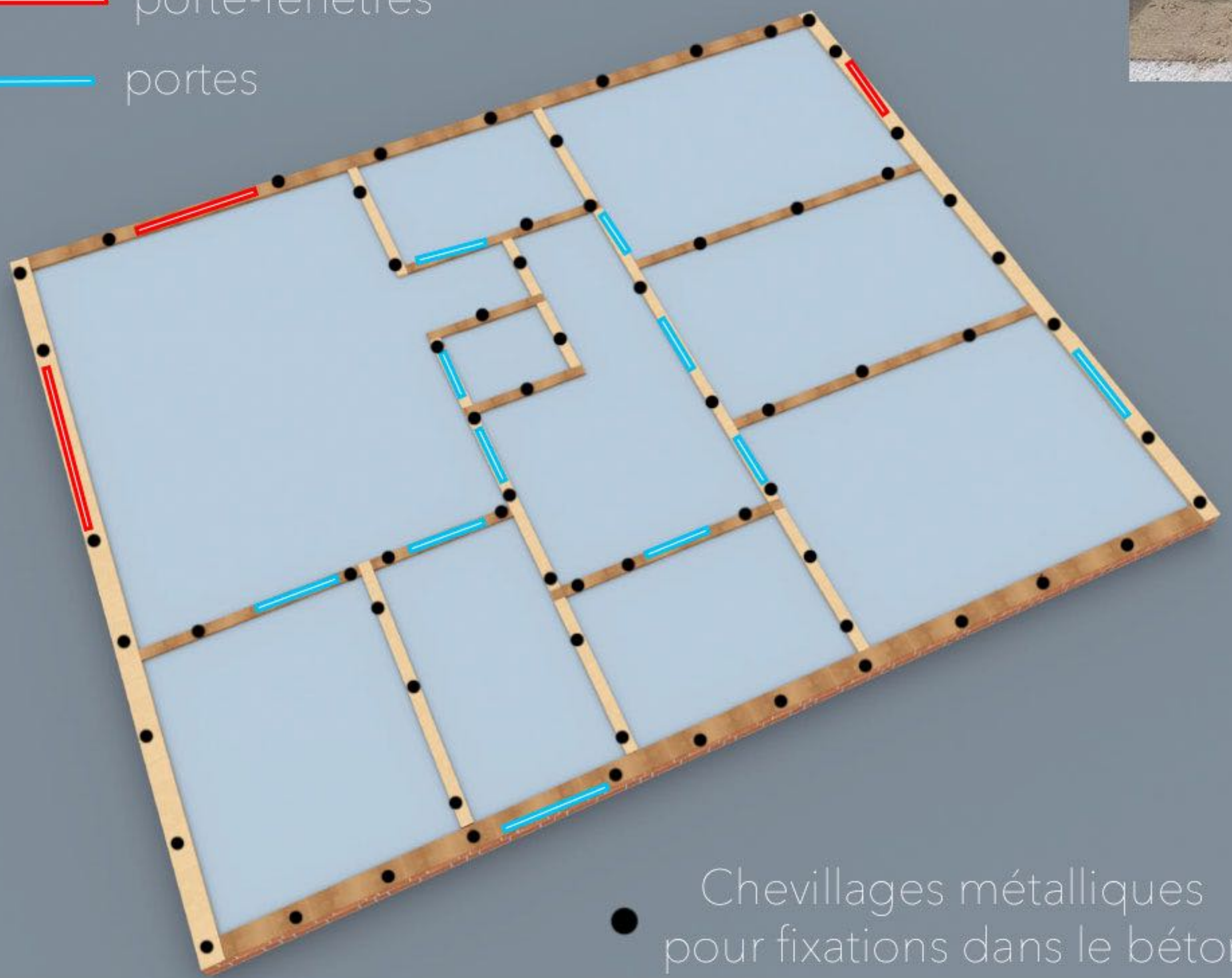


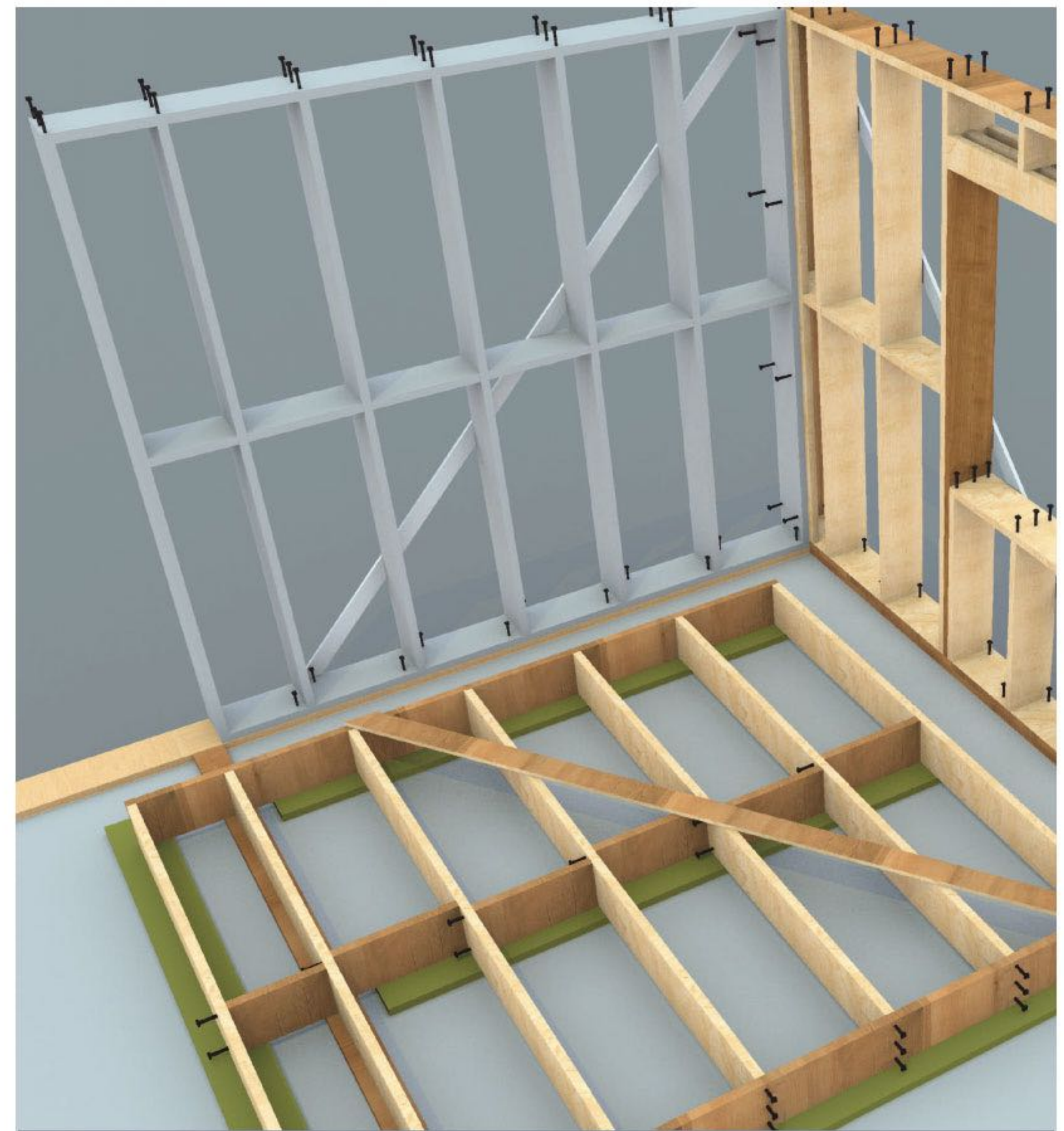


— porte-fenêtres  
— portes



● Chevillages métalliques pour fixations dans le béton





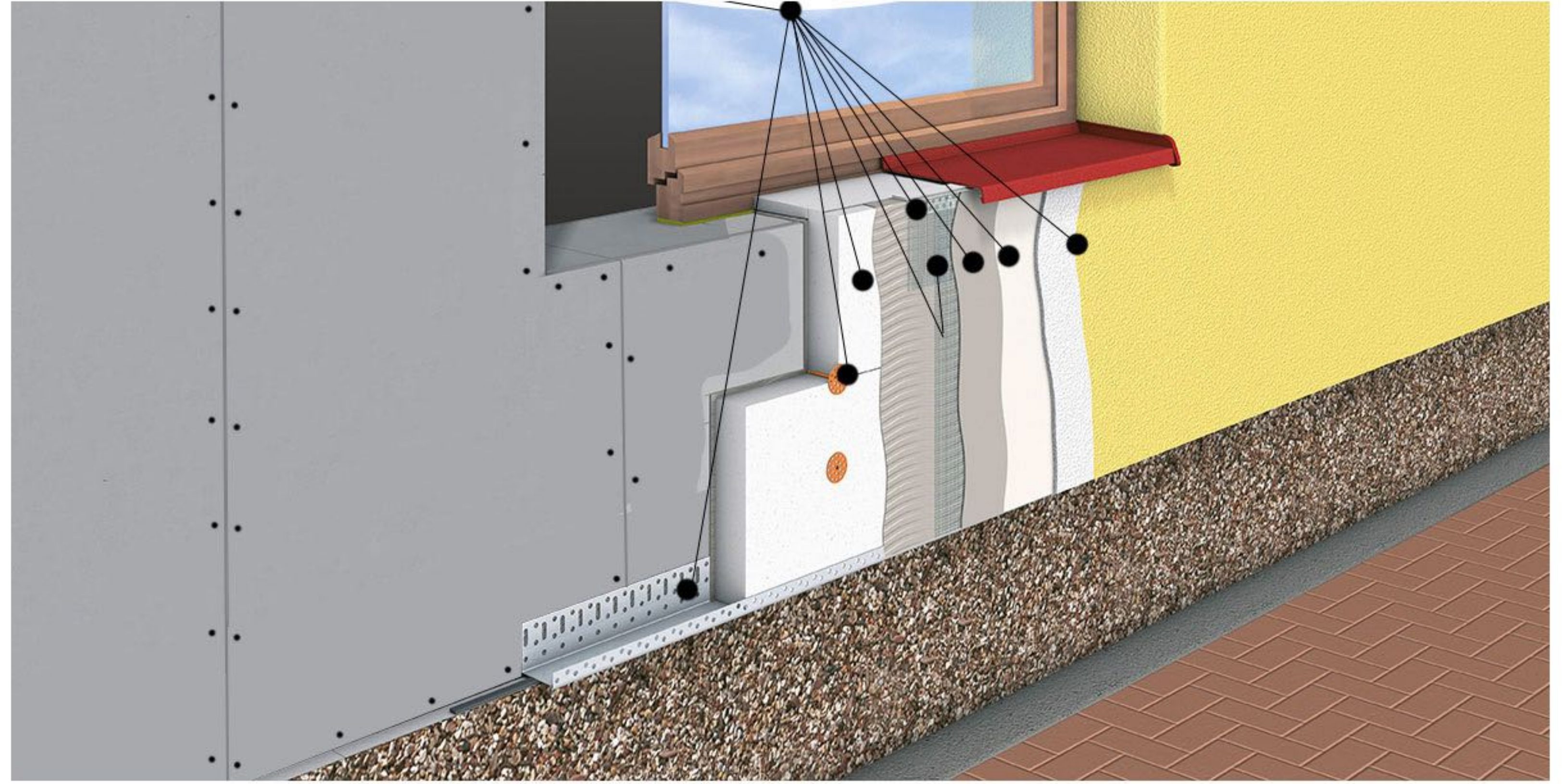


extérieur



intérieur









ASPECT : MÉTHODE 1



ASPECT : MÉTHODE 2

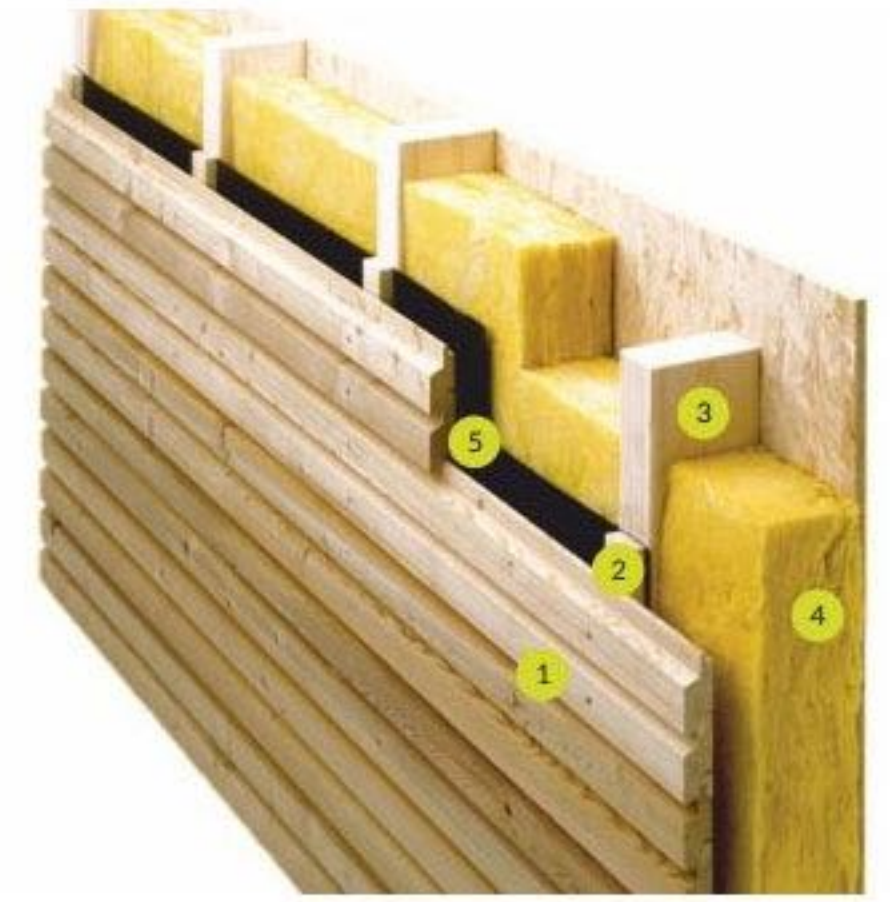




## ETAPE 1



- 1 bardage bois
- 2 liteau (2-3 cm)
- 3 ossature (5 - 15 cm)
- 4 isolation (5 - 15 cm)
- 5 écran pare pluie



## ETAPE 2

